

Model 3075-E1A

16-bit Relay Output Register

INSTRUCTION MANUAL

February, 1987

© 1981, 1982, 1985, 1987
Copyright by
KineticSystems Corporation
Lockport, Illinois
All rights reserved

Model 3075-E1A

TABLE OF CONTENTS

<u>Item</u>	<u>Page</u>
Features and Applications	1
General Description	1
Function Codes	1
Output Ratings	1
Simplified Block Diagram	2
Contact Protection	2
Ordering Information	2
Power Requirements	2
Strap Selection	3
Software Considerations	3
Contact Protection	4
Strap Locations	5
3075-E1A Connector Pinout	6
Warranty	7
Schematic Drawing #022147-D-3149	Insert

STRAP SELECTION

All 16 module straps are located by chips E and F (see page 5). The straps are numbered starting with strap 1 at the bottom and strap 16 at the top. Straps 1 through 15 are for the module I.D. command, while strap 16 is used for the Dataway Inhibit signal.

MODULE I.D.

These straps are the bottom 15 straps and are read onto the Dataway read lines (R1-R15) with the F(1)A(15) command.

INHIBIT

Strap 16 is used for the Dataway Inhibit signal. With the strap "in", the relays will be inhibited from operating when the Inhibit signal is asserted. With the strap removed from strap location 16, the Inhibit line will be disabled from affecting the operation of the relays. The module is shipped with the Inhibit signal strapped.

SOFTWARE CONSIDERATIONS

Since both Read and Write commands are provided, "Selective Set" and "Selective Clear" functions can be achieved by reading the register, performing the appropriate software sequence (logical AND, etc.), then writing the module register.

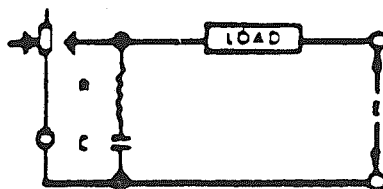
CONTACT PROTECTION FOR ALL MERCURY-WETTED RELAYS

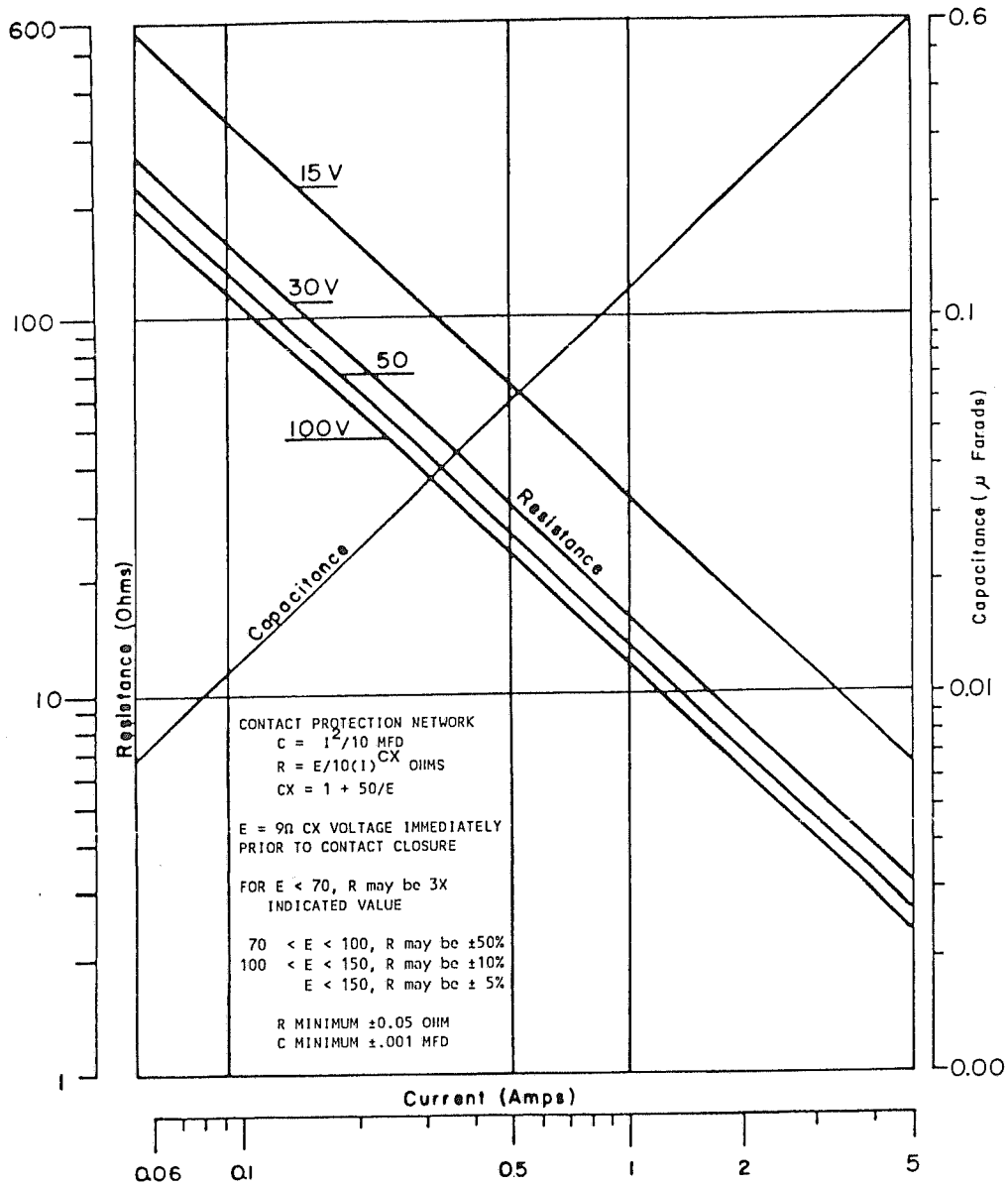
Contact loads that can cause arcing may result in contact failure unless contact protection is provided. It should be wired close to the relay terminals.

The R-C network shown is suitable for most loads. Component values may be obtained from the nomograph. Capacitance may be increased (up to 10 times) to minimize inductive load transients. Use peak values for AC circuits. No protection is required for voltages below 12 or currents below 65 ma.

The resistor may be eliminated for voltages below 50 with currents below 0.5A. The capacitor should not exceed the chart value.

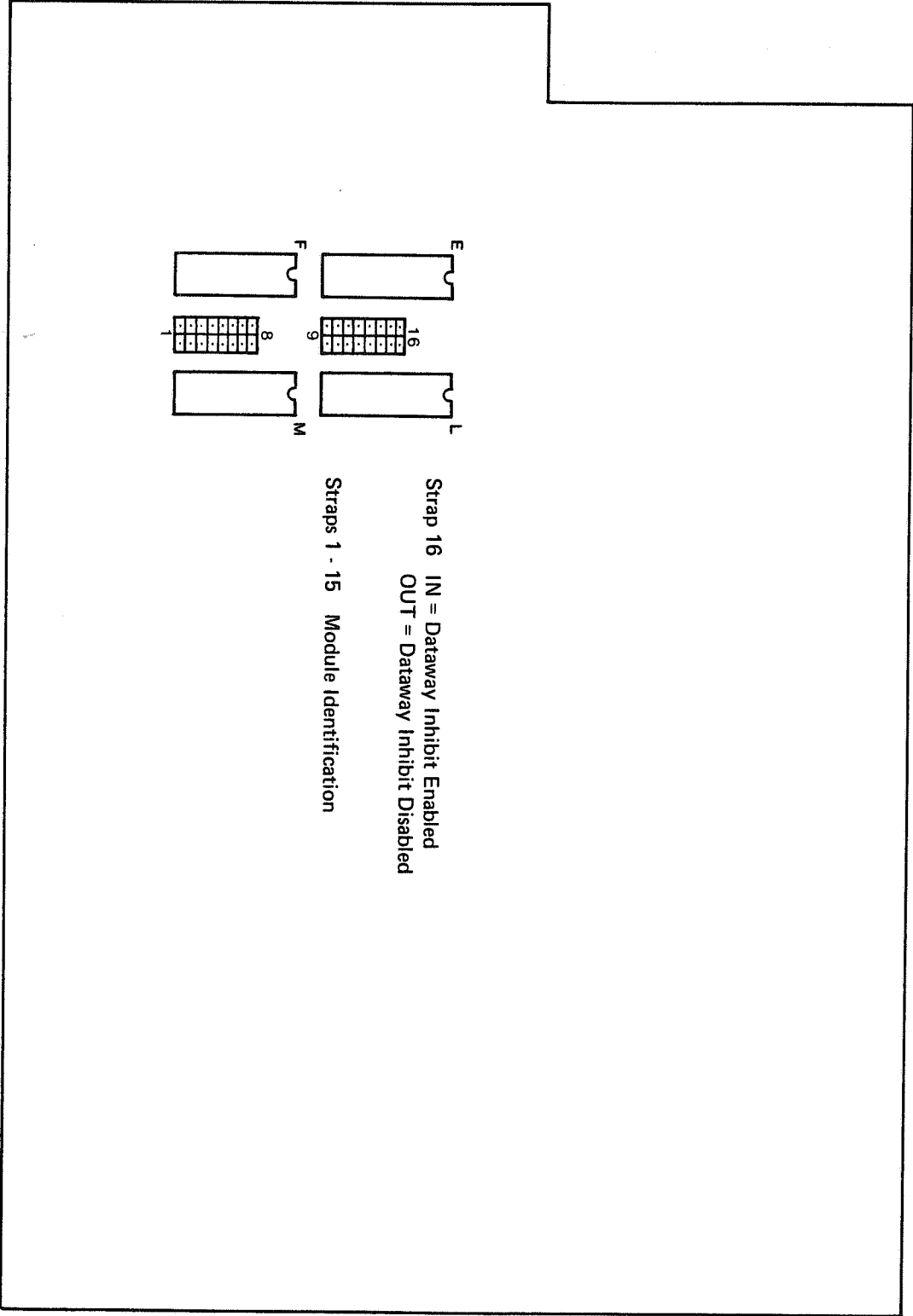
Highly capacitive loads do not require protection.

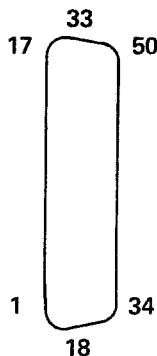




How to Use Nomograph

This nomograph affords a convenient means of determining the necessary contact protection. To determine C, the value of load current is found on the CURRENT axis. Reading directly up to the sloping capacitance line, the value of C is determined from the right hand CAPACITANCE scale. To determine R, read directly up from the load current value to its intersection with appropriate load voltage line. The value of R is then read from the left hand RESISTANCE scale. For AC loads, peak values of current and voltage must be used.





FACE VIEW

Pin/Wire List

NC: Normally Closed
 NO: Normally Open

50 PIN 'D'

PIN NO.

17	Common 6
16	NO 6
15	NC 5
14	Common 5
13	NO 5
12	NC 4
11	Common 4
10	NO 4
9	NC 3
8	Common 3
7	NO 3
6	NC 2
5	Common 2
4	NO 2
3	NC 1
2	Common 1
1	NO 1

PIN NO.

33	NC 11
32	Common 11
31	NO 11
30	NC 10
29	Common 10
28	NO 10
27	NC 9
26	Common 9
25	NO 9
24	NC 8
23	Common 8
22	NO 8
21	NC 7
20	Common 7
19	NO 7
18	NC 6

PIN NO.

50	
49	
48	NC 16
47	Common 16
46	NO 16
45	NC 15
44	Common 15
43	NO 15
42	NC 14
41	Common 14
40	NO 14
39	NC 13
38	Common 13
37	NO 13
36	NC 12
35	Common 12
34	NO 12

WARRANTY

KineticSystems Company, LLC warrants its standard hardware products to be free of defects in workmanship and materials for a period of one year from the date of shipment to the original end user. Software products manufactured by KineticSystems are warranted to conform to the Software Product Description (SPD) applicable at the time of purchase for a period of ninety days from the date of shipment to the original end user. Products purchased for resale by KineticSystems carry the original equipment manufacturer's warranty.

KineticSystems will, at its option, either repair or replace products that prove to be defective in materials or workmanship during the warranty period.

Transportation charges for shipping products to KineticSystems shall be prepaid by the purchaser, while charges for returning the repaired warranty product to the purchaser, if located in the United States, shall be paid by KineticSystems. Return shipment will be made by UPS, where available, unless the purchaser requests a premium method of shipment at their expense. The selected carrier shall not be construed to be the agent of KineticSystems, nor will KineticSystems assume any liability in connection with the services provided by the carrier.

The product warranty may vary outside the United States and does not include shipping, customs clearance, or any other charges. Consult your local authorized representative or reseller for more information regarding specific warranty coverage and shipping details.

PRODUCT SPECIFICATIONS AND DESCRIPTIONS IN THIS DOCUMENT SUBJECT TO CHANGE WITHOUT NOTICE.

KINETICSYSTEMS SPECIFICALLY MAKES NO WARRANTY OF MERCHANTABILITY OR FITNESS FOR A PARTICULAR PURPOSE OR ANY OTHER WARRANTY EITHER EXPRESSED OR IMPLIED, EXCEPT AS IS EXPRESSLY SET FORTH HEREIN. PRODUCT FAILURES CREATED BY UNAUTHORIZED MODIFICATIONS, PRODUCT MISUSE, OR IMPROPER INSTALLATION ARE NOT COVERED BY THIS WARRANTY.

THE WARRANTIES PROVIDED HEREIN ARE THE PURCHASER'S SOLE AND EXCLUSIVE REMEDIES ON ANY CLAIM OF ANY KIND FOR ANY LOSS OR DAMAGE ARISING OUT OF, CONNECTED WITH, OR RESULTING FROM THE USE, PERFORMANCE OR BREACH THEREOF, OR FROM THE DESIGN, MANUFACTURE, SALE, DELIVERY, RESALE, OR REPAIR OR USE OF ANY PRODUCTS COVERED OR FURNISHED BY KINETICSYSTEMS INCLUDING BUT NOT LIMITED TO ANY CLAIM OF NEGLIGENCE OR OTHER TORTIOUS BREACH, SHALL BE THE REPAIR OR REPLACEMENT, FOB FACTORY, AS KINETICSYSTEMS MAY ELECT, OF THE PRODUCT OR PART THEREOF GIVING RISE TO SUCH CLAIM, EXCEPT THAT KINETICSYSTEMS' LIABILITY FOR SUCH REPAIR OR REPLACEMENT SHALL IN NO EVENT EXCEED THE CONTRACT PRICE ALLOCABLE TO THE PRODUCTS OR PART THEREOF WHICH GIVES RISE TO THE CLAIM. IN NO EVENT SHALL KINETICSYSTEMS BE LIABLE FOR DIRECT, INDIRECT, SPECIAL, INCIDENTAL, OR CONSEQUENTIAL DAMAGES, INCLUDING LOSS OF PROFITS.

Products will not be accepted for credit or exchange without the prior written approval of KineticSystems. If it is necessary to return a product for repair, replacement or exchange, a Return Authorization (RA) Number must first be obtained from the Repair Service Center prior to shipping the product to KineticSystems. The following steps should be taken before returning any product:

1. Contact KineticSystems and discuss the problem with a Technical Service Engineer.
2. Obtain a Return Authorization (RA) Number.
3. Initiate a purchase order for the estimated repair charge if the product is out of warranty.
4. Include a description of the problem and your technical contact person with the product.
5. Ship the product prepaid with the RA Number marked on the outside of the package to:

KineticSystems Company, LLC
Repair Service Center
900 North State Street
Lockport, IL 60441

Telephone: (815) 838-0005
Facsimile: (815) 838-4424
Email: tech-serv@kscorp.com